

METAL / PIPE / CABLE DETECTION

Hand-held / Portable Metal Detector

Hand-held Metal Detector - ZHHBC

Hand-held Metal Detector (security) - SD 100



Ref. No : CS11 B001
Model : ZHHBC



Ref. No : CS11 B002
Model : SD100

Security :

Specifically designed to meet the particular requirements of searching for concealed metal objects in suspect parcels or in clothing.

Building Industry :

Ideally suited for locating objects hidden beneath the surface of all common building materials such as electrical wiring and pipe runs, cavity wall ties and reinforcing bars in concrete.

Performance :

The sensitivity of the detector is determined primarily by the size, shape and composition of the object to be detected.

Features

- Sounder
- Target detect light
- HI/LO sensitivity switch and light (SD 100)

Technical Specifications

Maximum Detection Range

Object	Low Sensitivity	Optimum/High Sensitivity
38 Calibre hand gun	20 cm (8")	28 cm (11")
Pen knife	10 cm (4")	15 cm (6")
13A Power cable	8 cm (3")	13 cm (5")
15 mm Copper pipe	13 cm (5")	18 cm (7")
Ear Ring (small)	2 cm (¾")	3 cm (1")

Portable Metal Detector



CS6PI - Pulse Induction Technique

On site portable metal detector suitable for locating hidden metal objects in the ground or wood. Typical target will be buried manhole covers in the roadway, steel reinforcement rod, fuel tank, pipeline, nails or bullets in wood. Detection range subject to the object size.

CS880 - Induction Balance Technique

Locates metal objects in the ground such as manhole covers, stopcock boxes, steel reinforcement rods.

Operation : Provides maximum sensitivity to solid metal objects whilst ignoring the small metal clutter which causes false signals in cheap inferior metal detectors.

Technical Specifications

Maximum Detection Range (CS6PI)

Object	Optimum Sensitivity
Manhole Cover	75cm (30")
Rusty Screw Φ 5mm/30mm long	18cm (7")

Ref. No	Model
CS11 B003	CS6PI
CS11 B004	CS880

Pipe / Cable Locator

Cable Avoidance Tool XD (c/w depth)



Ref. No : CR11 B005
Model : ZCSCATXD-33



LCD meter displays signal strength, operating mode, depth and battery condition

Multi-function digital locator with depth measurement. Locates a wide variety of underground pipes and cables, primarily as an aid to safe excavation. The LCD display indicates signal strength on a highly responsive bar graph. The precise location and direction of pipes and cables can easily be determined.

Technical Specifications

Controls

- On/Off control on handle, activated when in use.
- Three position function select switch:
 - P – POWER Mode for detecting live, imbalanced cables
 - R – RADIO Mode for detecting re-radiated radio signals
 - G – GENERATOR Mode for detecting conductors carrying the signal generated by the Signal Generator. This mode is also used for depth measurements.
- Sensitivity control
- Depth push button; above in G mode only will give a depth indication when pressed
- Detachable and User replaceable loudspeaker
- User replaceable base protector

Visual indicator

Large, high accuracy, easy to read LCD with ruggedised mounting. Shock resistant.

Display

- Signal strength
- Battery condition
- Depth in G Mode with button pressed: 0.5-3m (LINE), 1-9m (SONDE)
- Mode selected

Depth of detection

The XD will typically detect conductors to the following depths : P - 3 meters, R - 2 meters, G - 3 meters

Sensitivity at 1m

: P - 7mA rms, R - 10i A, G - 10i A

Frequency :

The frequency and filter characteristics are chosen to yield the optimum signal-to-noise ratio with a high degree of selectivity.

: P - 50 - 400Hz, R - 15 - 20kHz, G - 33kHz

Response width : 5% of depth

Location accuracy : 10% of depth

Depth measurement : Active in G Mode only activated by push button. Range 0.25-3.0m (LINE) 1.0-9.0m(SONDE)

Moisture/Dust resistant : IP65



Signal Generator

Enhance detectability of pipes and cables. Trace out the route of specific services. Use it to transmit an easily identifiable signal along a pipe or cable. Trace the line with a detector.

Ref. No : CR11 B006

Model : ZCSSG-33



Signal Clamp $\Phi 80\text{mm}$ (internal)

Clip the signal clamp around a cable or pipe safely transfer the Generator signal.

Ref. No : CR11 A001

Model : YIRCLAMP-33



Minitran

Trace non-metal pipes. Find pipe blockages. Track the movement of in-pipe plant. A range of self-contained transmitters propelled along a pipe or conduit, and their progress tracked from the surface by a locator.

Ref. No : CR11 A002

Model : YIRS-33



Mains Signal Injector

Allows safe transfer of signal to ring main via 3pin plug.

Ref. No : CR11 A003

Model : SG-Injet

Tracing Rod (Plastic Pipe) 20m -

Ref. No : CS11 A004

Model : YIRPPT20

Tracing Rod (Plastic Pipe) 50m -

Ref. No : CS11 A005

Model : YIRPPT50

Conveyor Metal Detector

INS-100BH- Needle Detector



Features

Simple operation

Technical Specifications

Detection Range : 40 x 20 cm (LxW)

Alarming Signal : Buzzer and red LED

Detection Sensitivity : Needle ($\Phi 0.6 \times 33\text{mm}$ long) up to 8 cm
Other metal object up to 30cm depending on size.

Power

: DC 9V, 500mA

Ref. No : CP11 C001

Model : INS-100BH

Ferrous Needle and Nail Detector



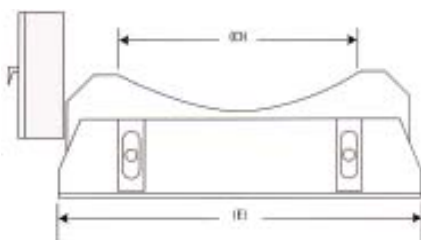
Can rapidly and accurately detect needles, hooks, ferrous fragments and other sharp ferrous foreign objects hidden inside clothing, food products, shoes, socks, alarm signal and stop the conveyor belt, and one of eight red indicator lights will go on to indicate the location of the foreign object.

Technical Specifications

Ref. No	Model	Detection Range (LxW)	Sensitivity
CP11 C002	INS-300-3020	30 x 20 cm	1.5mm Φ
CP11 C003	INS-300-6020	60 x 20 cm	1.5mm Φ
CP11 C004	INS-300-3015	30 x 15 cm	1.2mm Φ
CP11 C005	INS-300-6015	60 x 15 cm	1.2mm Φ
CP11 C006	INS-300-3010	30 x 10 cm	1.0mm Φ
CP11 C007	INS-300-6010	60 x 10 cm	1.0mm Φ

Conveyor Speed : 35m per minute

Conveyor Metal Detector



Applicable to:

- Food, pharmacy, textile, garment, shoemaking, toy, rubber, resources recycling and sports equipment industries etc.
- Brick manufacturing plants.
- Ceramic Tiles Plants.
- Quarries.
- Glass Manufacturing Plants.

Features

- Various kinds of tunnel dimensions and shapes are available for different kinds of goods-to-be-tested.
- Various corresponding models for dry or wet goods-to-be-tested.
- The detector unit can be installed properly on existing production lines. Besides, complete sets with various kinds of conveyor belt are also available.
- Compatible with any brand of rejecting appliance, which is for getting rid of unqualified product.
- Providing the models with computer interface, which could be integrated with the FA production management
- Easy to operate
- Scaled sensitivity and delay trip time setting
- Instant and time delay trip relay output
- Ferrous and non ferrous moving metal detection
- Status indication lamp
- Remote sensitivity, timer and trip reset control. (optional)

Technical Specifications

- Tunnel dimensions : 30 cm (W) × 10 cm (H)
30 cm (W) × 12 cm (H)
32 cm (W) × 17 cm (H)
44 cm (W) × 27 cm (H)
Other customized dimensions
- Types of conveyor : Several types of conveyor are available for different kinds of goods-to-be-tested.
- Rejecting interface : Dry contact (relay) for driving rejecting appliance. Relay time and sustain time are adjustable continuously.
- Computer interface : Optional – IrDA, Bluetooth, RS-232, USB
- Highest Sensitivity : Fe 0.7mm ~ 1.5mm
SUS 2.0mm ~ 3.5mm
- Power consumption : 20VA
- Sensitivity : Dia, 20mm × 2mm min. (mild steel)
- Protection : IP54
- Conveying speed : 200mm to 1200mm/sec

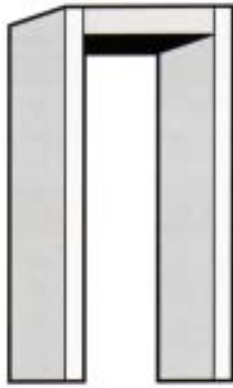
Dimension

Ref. No	Model	Belt Width	D	E
CP11 C008	SGH230V-600	600mm	600mm	900mm
CP11 C009	SGH230V-750	750mm	750mm	1100mm
CP11 C010	SGH230V-900	900mm	900mm	1250mm
CP11 C011	SGH230V-1050	1050mm	1050mm	1400mm

Walkthrough Metal Detectors - 8000, 9000, 8000C, 9000C



Ref. No : CL11 D001
Model : 8000



Ref. No : CL11 D003
Model : 9000



Ref. No
CL11 D002
CL11 D004
Model
8000C
9000C



- Durable protection against threat and theft.
- Model 8000 is a pulsed field metal detector that has been engineered to be attractive, durable, and cost effective.
- Model 9000 provides extremely low false alarm rates and offers the highest throughput traffic flow. Unique patented dual antenna construction eliminates false alarms on personal items, providing maximum detection and maximum reliability.

Features

- Radio frequency interference rejection 25 to 1000 MHZ.
- DSP circuitry eliminates spikes, noise, etc.
- Full Detection, no sensors required.
- LCD shows the individual's numerical peak metal detection reading.
- LED alarm indicators, tone controlled audio alarm.
- LCD display is illuminated and illustrates alarm levels, diagnostic functions and operational menu.
- Bargraph meter indicates background noise and each individual's metallic content.
- Diagnostics: A menu gives full system information on functioning circuits and confirms that all system parts are working.
- 70 Standard programs (capacity 99 : 8000; capacity 100 : 9000; capacity 50 : 8091)
- Sensitivity range: 1 to 99.
- Remote alarm relay.

Technical Specifications

Performance Standards **Electronics**

- Meets and exceeds NILECJ standard 0601.00 level 1-5 and F.A.A. Airport Security Regulations
- Microprocessor computer controlled circuitry with 12 digit modular keypad entry control, backlit LCD display, tricolor LED bargraph meter and audio/visual alarm, highly visual operation and alarm LED indicators.

Archway (8000)

- Reinforced plasticized housing which contains the multi-field antennas.
- Standard Color: Grey

Archway (9000)

- Reinforced plasticized housing which contains the multi-field antennas.
- Standard Color: Grey or Ivory
- Specify model : 9000-P (plastic) 9000-F (formica)

Archway (8000C/9000C)

- Reinforced plasticized housing which contains the operating antennas.
- Standard Color: Grey
- Select 9000C (Compact, Columnar) or 8000C (Compact, Columnar)

Walkthrough Metal Detectors - 8091C



Model 8091 is a superior ultra sensitive and precious metal detection system. Designed for high sensitivity correctional and anti-theft applications, the 8091 excels in controlled security applications.

Features

- Uniform detection within the entire archway
- Fast and easy calibration for program and sensitivity settings
- Detects razor, blades, microprocessor chips and gold rings.
- Detects (1) U.S. Quarter coin

Ref. No : CL11 D005
Model : 8091C